

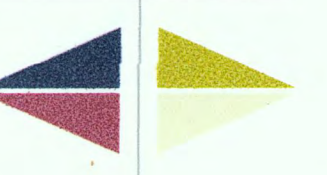
**PARTICULARS**

LOA	48' 5"
LWL	34' 1"
BEAM	18' 0"
DRAFT	7' 0"
DISPLACEMENT	~20,600 LB
SAIL AREA	TOTAL 1066 F <sup>2</sup>
	MAIN 633 F <sup>2</sup>
	100% FA 433 F <sup>2</sup>
SA/D	~22.7
D/LWL	~232
I	59.0'
J	15.7'
P	54.0'
R	17.5'

DATE

REVISIONS

**STEPHENS WARING**  
YACHT DESIGN



DESIGNED BY: STEPHENS WARING YACHT DESIGN  
92 Main St., 3rd Floor | Belfast, ME 04915 | 207-338-6636  
STEPHENSWARING.COM

PROJECT  
**48-FOOT CLASS**  
**CRUISING SLOOP**  
CLIENT  
**DAVID AND MARGARET COIT**

TITLE  
**CONCEPT SKETCH**

DWG #: **2017-CONCEPT5**  
SCALE: **1:32 (3/8"=1')**  
REFERENCES:  
**3D PDF; LINES PLAN; PEELUP SPECIFICATION**

DWG BY: **R. STEPHENS**  
DATE: **DEC 19, 2017**